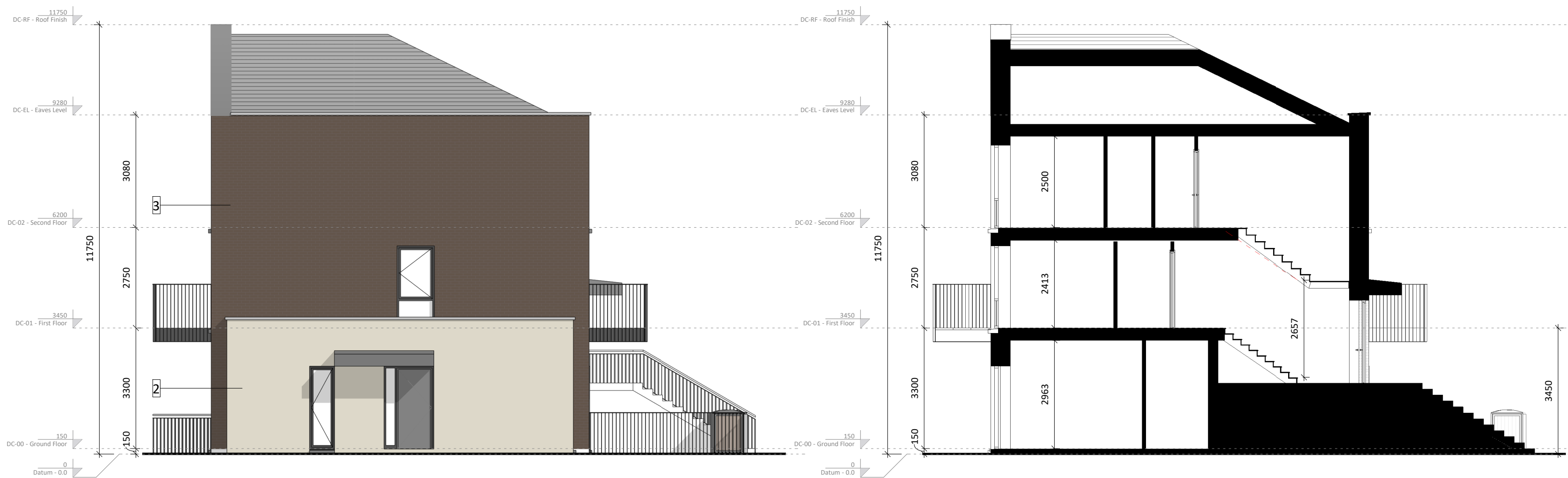




① DC - Front Elevation
1:100



② DC2 - Gable Elevation
1:100

⑤ Section AA
1:100



③ DC - Rear Elevation
1:100



④ DC1 - Gable Elevation
1:100

Site 3 Duplex Type DC Elevations and Section

- Materials Legend**
(Finishes to Architects' later selection)
1. Brick - Buff Tone
 2. Self-coloured Render - Ivory Tone
 3. Brick - Warm Brown Tone
 4. Brick - Smoked Red Tone
 5. Self-coloured Render - Warm Grey Tone
 6. Engineered Brick - Grey Tone
 7. Clay Brick - White Tone
 8. Self-coloured Render - Off-White Tone
 9. Zinc Metal Finish
 10. Galvanised + Powder-Coated Metal - Grey

Revision Description	Date	Rev. No.	Issued by
Issued For Planning	28.03.2025	A3-C01	CM
Any reference to fire safety design or performance is presented for coordination purposes only. Refer only to the granted Fire Safety Certificate, and fire consultant's information for fire safety design, specification and performance.			
Figured dimensions only to be used. This drawing is copyright of O'Mahony Pike Architects Ltd. All information is shared as per approved use in accordance with ISO19650-2:2018, Table 5; Standard Codes for Suitability of Models and Documents and the BEP. If the 'Status' field is empty, this information has been shared at SO - WIP.			

architecture urban design email: info@omahonypike.com tel: +353 1 202 7400 fax: +353 1 283 0822 www.omahonypike.com	Dublin The Chapel Mount St. Anne's Milltown, Dublin 6 D06 XN52 Ireland	Cork One South Mall Cork City Co. Cork T12 CCN3 Ireland	Project Code: KSG3	Scale @ A1: As indicated
			Project Lead: DMcD	Date: 28.03.2025
			Drawn By: LR	Revision: A3-C01
			Job No.: KSG3	Status: S2
			Purpose: Planning	

Project: Kishoge Part 10 Application
Location: Clonburris, Co. Dublin
Client: South Dublin County Council

Drawing Title: Site 3 Duplex Type DC Elevations and Section
Drawing No.: KSG3-OMP-DC-ZZ-DR-A-2000

Source File: KSG3-OMP-ZZ-ZZ-M3-A-0001.rvt